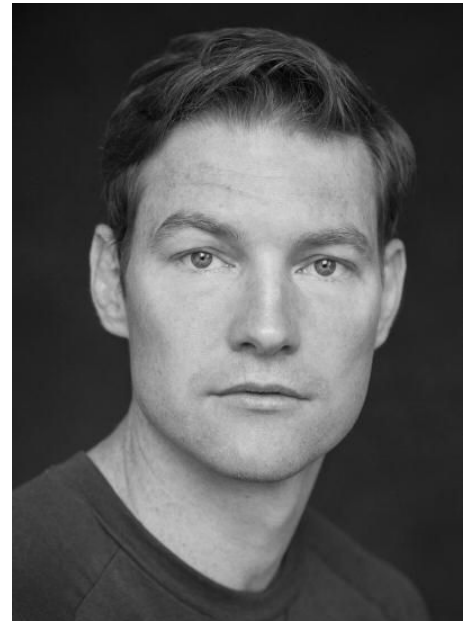




Barry John Kinsella



Hair: Short brown

Height: 6' 1"

Eyes: Blue

Nationality: Irish

Training: Three year Bachelor in Acting (Hons), The Lir Academy

Theatre Experience:

Production	Character	Company	Director
La Ronde	The Husband	The Lir Academy	Lynne Parker
The Winter's Tale	Shepherd/Lord	The Lir Academy	Nona Sheppard
The Caucasian Chalk Circle	Fat Prince/Farmer /Sergeant/Musician	The Lir Academy	Tom Creed
Is this it? (devised)	James	The Lir Academy	Louise Lowe
The Playboy of the Western World	Shawn Keogh	The Lir Academy	Caitríona McLaughlin
Thyestes	Atreus	The Lir Academy	Annabelle Comyn
Love's Labour's Lost Duets	Boyet	The Lir Academy	Hilary Wood Graham Cantwell

Film:

WAVE	Doctor	Assembly Productions	Benjamin Cleary TJ Peyton-O'Grady
Look Closer Duets	Art Rich	AS Productions Film Venture	Aleksander Szeser Graham Cantwell

Accents: Standard English, RP, Estuary, Cockney, Yorkshire, Manchester, Liverpool, Standard Irish, North and South Dublin, Cork, Kerry, Belfast, Standard American, New York

Singing: Tenor

Stage combat: Certified Rapier & Dagger and Unarmed (IDCA). (Distinction)

Dance: Cha-Cha, Polka, Salsa, Foxtrot, Waltz, Tango, Line-Dancing and Basic Period

Contact: Seána Skeffington, Marketing Manager, The Lir Academy; seana.skeffington@thelir.ie
+353 (0) 1 896 4386