



NATIONAL ACADEMY  
OF DRAMATIC ART



Trinity College Dublin  
Coláiste na Tríonóide, Baile Átha Cliath  
The University of Dublin




# GRAD FEST 2021

10TH – 30TH  
SEPTEMBER

#GRADFEST2021

[www.thelir.ie](http://www.thelir.ie)






**GRADFEST 2021** is a season of productions directed and designed by this year's MFA students. The three plays being produced are a culmination of an intensive year of hands-on training in theatre directing, lighting design, costume design and set design. The cast of each production consists of final year acting students and the backstage roles are undertaken by final and second year Stage Management and Technical Theatre students.

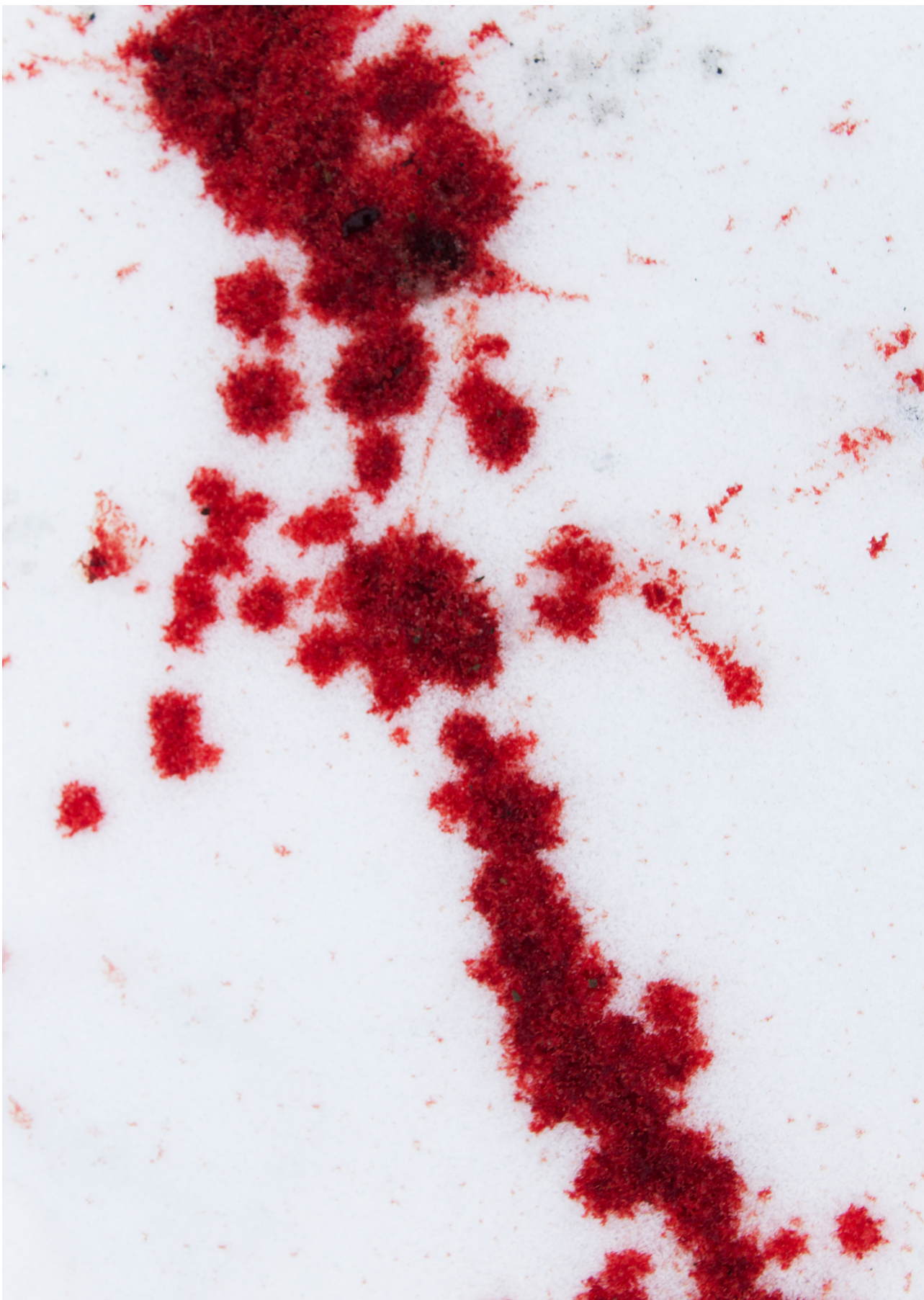
This year is a new benchmark for The Lir Academy. Not only are the three graduating directors all women but the plays being

produced are also written by women. This is also the first time that a play written by a former graduate (Gillian Greer) will be performed as part of GradFest.

This is a direct reflection of the continuing work that is taking place at The Lir Academy to improve equality of representation and access to our programmes across all genders. We are truly very excited to be presenting this work and marking this moment. We are also very grateful for the support of our partners AIB in realising this year's GradFest.

We hope you enjoy the provocative and profound works that make up our programme this year.





# MIDWINTER

by Zinnie Harris

**"My horse for your boy!"**

During the bleakest of winters, at the end of a decade-long war, Maud is dragging a dead horse to the middle of nowhere. As she prepares to devour it, she makes a deal with an old man to take his starving grandson under her protection.

As her husband returns from the war, the struggle to start over turns into a second conflict and once again, Maud is faced with her most bitter decision.

A numbing examination of the strength of the human condition in the face of extreme circumstances.

*Midwinter* was first presented at The Swan Theatre, Stratford-upon-Avon, in October 2004.

---

## CREATIVE TEAM

Director  
Set and Costume Designer  
Lighting Designer  
Sound Designer  
Props Maker

**Eftychia Spyridaki**  
**Florentina Burcea\***  
**Michael Rathbun**  
**Chris Merton**  
**Shauna O'Neill\***

## CAST

Maud  
Sirin/Trent  
Grenville  
Leonard

**Chloe O'Reilly**  
**Taylor McClaine**  
**Cathal Ryan**  
**Coleman Pedigo**

## CREW

Company Stage Manager  
Deputy Stage Manager  
Assistant Stage Manager  
Costume Supervisor  
Chief Lighting  
Lighting Op  
Hair and Makeup  
Scenic

**Aoife O'Rourke**  
**Síle Mahon**  
**Iris Liange**  
**Eoin Daly**  
**Síofra Nic Liam**  
**Evan Keogh**  
**Sarah O'Rourke**  
**Claudia Lamantea**

# MEAT

by Gillian Greer

**"We can't guarantee your comfort, but we can assure you that this will be an experience."**

An all-meat menu, a chef and his vegan ex-girlfriend.

Ten years after they broke up, a couple meet for dinner having not spoken since. Over the course of the evening, Max and Ronan can't find the right words to bring to the table. What was this one night that everything went wrong? Max is ready to write about it. Ronan doesn't remember. But whose words will weigh more in the end?

A tense dark drama about power, consent and butchered relations.

Presented by arrangement with Nick Hern Books.

---

## CREATIVE TEAM

Director  
Set and Lighting Designer  
Costume Designer  
Sound Designer

**Franziska Detrez**  
**Brian Mitchell**  
**Louise Dunne\***  
**Iain Faulkner**

## CAST

Max  
Ronan  
Jo

**Shona Gibson**  
**Liam Bixby**  
**Rebecca Raeburn**

## CREW

Stage Manager  
Assistant Stage Manager  
Costume Supervisor  
Chief Lighting  
Lighting Op  
Food Stylist  
Hair and Makeup

**Alannah O'Leary**  
**Adam Malone**  
**Melania Sulowska**  
**Lucy Varley**  
**Imor Hartnett**  
**Orfhlaith Noone**  
**Sarah O'Rourke**





# MACHINAL

by Sophie Treadwell

**“I can’t go on like this much longer--going to work--coming home--going to work--coming home – Sometimes in the subway I think I’m going to die. I got to do something. I feel like I’m stifling.”**

Helen’s private feelings begin churning when her corporate boss proposes marriage, locking her into the predictable, monochrome life of the American housewife. Helen does everything in her power to conform, but when she gets a taste of liberation, she resists the machine of upper-class society and attempts to free herself.

Presented by arrangement with Nick Hern Books.

### CREATIVE TEAM

Director  
Set Designer  
Costume Designer  
Lighting Designer  
Sound Designer

Holly Griffith  
Irene Enguita  
Laura Fajardo\*  
Kevin Murphy  
Fiona Sheil

### CAST

Helen  
Telephone Girl & others  
Husband & others  
Mother & others  
Lover & others  
Doctor & others  
Defence Attorney & others  
Prosecuting Attorney & others  
Filing Clerk & others

Honi Cooke  
Terri Jade Donovan  
Benedict Landsbert-Noon  
Maeve Bradley  
Macleod Stephen  
Jeremy Martin  
Molly Whelan  
Julie Crowe  
Rowan Finken\*

### CREW

Stage Manager Rachel Ellen Bollard  
Assistant Stage Manager Meabh Crowe  
Costume Borg Dóra  
Benediktsdóttir  
Chief Lighting Síofra Nic Liam  
Lighting Op Grace Donnery  
Scenic Colm Lombard  
Hair and Makeup Sarah O’Rourke

# MFA GRADUATING STUDENTS

## STAGE DESIGN, INCLUDING LIGHTING, COSTUME AND SET DESIGN



Brian Mitchell

**Brian Mitchell** has worked in the industry for 15 years. In his role as assistant technical manager in the Everyman Theatre Cork, he facilitated and oversaw all technical requirements for hundreds of national and international award-winning shows. He has a huge wealth of experience across many disciplines including theatre, opera, ballet and musicals. He has designed and lit numerous musical artists including Herbie Hancock, Gregory Porter, Steve Windwood, The Frames and Camille O'Sullivan. Brian is co-founder of For The Birds Theatre Company. Established in 2016, the company has toured both of their original productions *Sisters of the Rising* and *Seahorse* nationally.



Irene Enguita

**Irene Enguita** After graduating from Design in Universidad Complutense de Madrid in 2020, Irene Enguita came to The Lir Academy to start her career as a Stage Designer.

Her experience with theatre comes from nine years of theatre courses in Madrid at both Escuela de Teatro Cuarta Pared and Escuela de Cine y Teatro Metr polis CE where she acted and helped create set designs in educational theatre productions. She developed a number of stage design-related projects during her studies in both her degree and her year abroad at Aalborg University, Denmark, in 2018, where she collaborated with performers and fellow designers in various productions.



Kevin Murphy

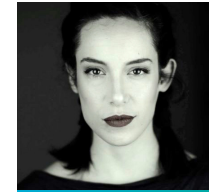
**Kevin Murphy** is a lighting designer from Dublin. His recent credits include *Dragon* by Fizz & Chips Theatre Company, *Kipps*, *The New Half A Sixpence Musical* by Galway University Musical Society, *The Fregoli Heart Project* by Fregoli Theatre, *Eternal Youth* by Niamh Ryan and *The Monday B.C.* by Jokerthief Theatre Company. Kevin holds an MA Arts Policy & Practice from NUI Galway and has also worked extensively in arts administration with Galway-based arts festivals including Babor  International Arts Festival and Galway Theatre Festival and as a stage manager with Branar T atar do Ph ist .



Michael Rathbun

**Michael Rathbun** is a theatre professional who designs for theatre, dance, broadcast, and more. His design experience includes work in L.A., San Diego, Chicago, Boston, Bangkok, and Paris, with notable institutions including San Diego's Old Globe Theatre, Chicago's Steppenwolf Theatre, and others. He currently holds the position of Touring Lighting Director for Benjamin Millepied's LA Dance Project. He is also experienced as a Technical Director, Production Manager, Master Electrician, and is a member of IATSE Local 122. Some notable credits of his include Kanye West's Sunday Service Choir (Associate Lighting Designer), Lynn Nottage's *Intimate Apparel* (Lighting Designer), Ariel Dorfman's *La Muerte y La Doncella* (Scenic and Lighting Designer), Benjamin Millepied's *I Fall, I Flow, I Melt* (Associate Lighting Designer) and Jez Butterworth's *Jerusalem* (Midwest Premier, Lighting Designer). Examples of his work can be found in his online portfolio at [mfrdesigns.net](http://mfrdesigns.net).

## MFA THEATRE DIRECTING STUDENTS



Eftychia Spyridaki

**Eftychia Spyridaki** has worked as a professional actor, director, assistant director and dramaturg in Thessaloniki, Greece for the past 8 years. She served as an associate actor and assistant director with the National Theatre of Greece, the National Theater of Northern Greece and on independent theatre productions.

In 2018, she adapted and staged an original production of Stratis Mirivilis' classic novel *Those in the Tomb*, which led to participating in the European Venice Open Festival for Young Artists. Eftychia's adaptation and direction of *Sylva* (based on Thomas' Korovinis' *The Round of Death*) continues to tour. She has co-adapted and

assistant directed a sold-out stage adaptation of Carlo Goldoni's *Servant of Two Masters* at The National Theater of Northern Greece.

Eftychia holds a Bachelor from the Drama School of Northern Theatre Greece, and a Bachelor of Theater Studies with an integrated Master of Arts from the Aristotle University of Thessaloniki. She is the co-founder of O9 Group Theater and co-creator of its independent theatre productions in Greece such as Bertolt Brecht's *The Good Person of Szechwan* and Luigi Pirandello's *Tonight We Improvise*.



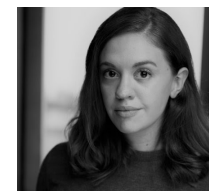
Franziska Detrez

**Franziska Detrez** is a German theatre director and performer based in Germany and India. She holds a Master of Arts in Theatre Studies from the Free University in Berlin. Since 2012, she has worked with the performance art collective Schmarntelligenz, constantly producing shows for theatre, performance and digital art.

She has worked as assistant director and stage manager in productions at the Gandersheimer Domfestspiele in Germany and the Konzert Theater Bern in Switzerland. Since 2015, she has repeatedly worked with the Auroville Theatre

Group in India and recently collaborated with the Estonian Polygon Teater. Her most recent directing work includes a production of *Who Sits Behind My Eyes?* in Pondicherry in India.

Franziska is continuously expanding her knowledge in various theatre practices. She has taken part in workshops in dance theatre under Abhilash Ningsappa from Bangalore (India), mask theatre under the guidance of Centocani Branco Teatrale from Italy and Butoh with Rhizome Lee at the Subbody Resonance Butoh School in Dharamsala (India).



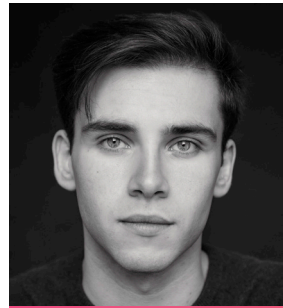
Holly Griffith

**Holly Griffith** has worked as a professional director, actor, and writer in Tucson, Arizona for the past 8 years. She served as an Artistic Associate at The Scoundrel & Scamp Theatre. There, she adapted and staged an original production of Antoine de Saint-Exup ry's *The Little Prince*, which earned an Arizona Daily Star Mac Award nomination for Best Director. Holly's direction of Brian Friels' *Lovers Pt. 1* and *This Girl Laughs*, *This Girl Cries*, *This Girl Does Nothing* earned similar nominations. She also co-adapted and assistant directed a new stage adaptation of Herman Melville's *Moby Dick* at The Rogue Theatre which played to sold-out audiences in January 2020.

Holly was a Resident Actor at The Rogue Theatre, for over 7 years. Her role as Maureen in *The Beauty Queen of Leenane* earned a Carmen Award for Best Lead Performer, and her roles as Harper Pitt in *Angels in America* and C in *Three Tall Women* earned Arizona Daily Star Mac Award nominations for Best Actress.

Holly holds a Master of Arts in English Literature from the University of Arizona. She maintains special interests in ensemble theatre, literary adaptation, magical realism, and dance.

# GRADUATING ACTING STUDENTS



Benedict Landsbert-Noon



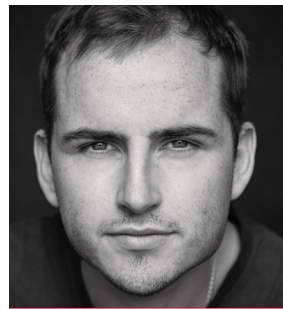
Cathal Ryan



Chloe O'Reilly



Coleman Pedigo



Darragh Feehely



Honi Cooke



Jeremy Martin



Julie Crowe



Liam Bixby



Macleod Stephen



Maeve Bradley



Molly Whelan



Rebecca Raeburn



Shona Gibson



Taylor McClaine



Terri Jade Donovan

# GRADUATING STAGE MANAGEMENT AND TECHNICAL THEATRE STUDENTS



Aoife O'Rourke



Borg Dóra Benediktsdóttir



Chris Merton



Evan Keogh



Gavin Kennedy



Grace Donnery



Imor Hartnett



Iris Liange



Meabh Crowe



Shauna O'Neill



Síle Mahon



Síofra Nic Liam



Thomas Barry



Tom O'Reilly

## PRODUCTION CREW

Costume Crew: Dimitri Mc Evoy  
Emily O' Riordan  
Hannah Novak  
Oisín McMahon  
Robert Peate

Scenic & Stage: Aoife Malin  
Iain Synnott  
Leo Sheridan  
Maeve Smyth  
Ross Smith

Set & Stage Crew: Dara Gill  
Emmet Brady Dunne  
Grainne Earley  
Josh Power  
Luke Jenkins  
Maisey Lorimer

Tech Crew: Aimee Crilly  
Archer Bradshaw  
David Brydone  
Sean Cassidy Tyrell  
Thomas Allen

\*Welcome back to all the Lir graduates working on these shows.

Thank you to the admin, acting, stage management and technical theatre staff and tutors who support the work of the students throughout these productions.

Our sincere thanks also to the following for their help: Salim at The Marker Hotel; The Temple Bar; Café Bar H; as well as Sarah Latty and Cois Ceim.

Our sincere gratitude to all our New Connections, Friends and Supporters of The Lir Academy who have made the last year possible for all the students and staff. We are so looking forward to the time when we can gather together again.

As GradFest 2021 brings our current academic year to a close, we would like to acknowledge the passing of Niall McCullough and Tim Scanlon. These two incredible energies were immense supporters of our work. They will be very much missed.

## INFO

### BOOKING TICKETS

Tickets can be booked via the events section on The Lir's website ([thelir.ie](http://thelir.ie)).

### REFUNDS

Tickets are non-refundable except in the event of a show being cancelled.

The Lir Academy is a registered charity. RCN 20076689

For further information on our activities, please contact [development@thelir.ie](mailto:development@thelir.ie)

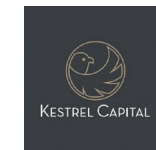
Follow GradFest on our social media channels:

#GRADFEST2021



## THANK YOU TO OUR SPONSORS, PARTNERS AND SUPPORTERS

### CORPORATE SPONSORS



The M.Gavin Bursary

THE DOYLE COLLECTION  
LONDON • DUBLIN • WASHINGTON DC • CORK • BRISTOL

### OUTREACH AND DIVERSITY SPONSORS



### LEAD TECHNICAL SUPPORTER



### TECHNICAL SUPPORTERS







NATIONAL ACADEMY  
OF DRAMATIC ART

[www.thelir.ie](http://www.thelir.ie)